

Brass Full Port Ball Valve

PN25

Size ½" to 2" only

Specifications:

IVAL® Brass Ball Valve, with Brass CW617N Body, two-piece construction, PN25 rating.

Anti-blow out stem, adjustable packing.

Full Bore Brass EN12165 CW612N Ball. PTFE seat and stem seal.

Operator: Lever, Quarter turn.

UK END CONNECTION: BSPT Taper Threaded to BS EN 10226-1, compatible with ISO 7/1.

WRAS approved.

Features:

- Ball Valves are light, compact units which are easy to install and operate, yet their robust construction ensures long, trouble-free service life.
- PN25 Pressure rating to suit demanding system pressures.
- 90° handle operation for simple use
- Full bore design to facilitate optimal flow rates with minimum turbulence
- Conforms to MSS-SP-110.

Pressure/Temperature Ratings:

Temperature (°C)	-10 to +100
Pressure (Bar)	25

Test Pressures:

Each valve is individually Pneumatic / air tested to BS EN12266 undergoes the standard 6 bar air test.

(PNEUMATIC) Shell: 6 bar - **Seat:** 6 bar

Materials:

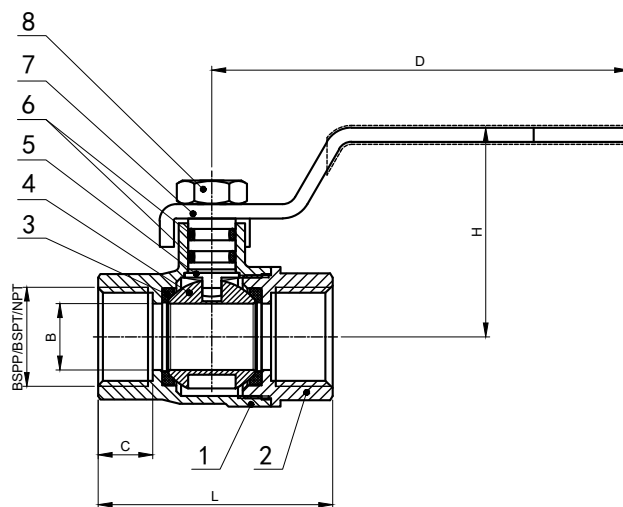
No.	Description	Material	Specification
1	Valve Body	Brass	EN12165 CW617N
2	Bonnet	Brass	EN12165 CW617N
3	Seal Ring	PTFE	-
4	Ball	Brass	EN12165 CW612N
5	Spindle	Brass	EN12164 CW617N
6	O-Ring	EPDM	-
7	Handle	Carbon Steel	Zinc Plated
8	Nut	Stainless Steel	AISI 304

Dimensions:

Size	L	C	ØB	H	D	Weight
½"	49.5	11.5	14	44.2	88	190
¾"	57.5	13.5	19	47.7	88	260
1"	67.5	15.5	24	53.4	102	403
1.1/4"	78	16	31	60.4	116	601
1.1/2"	85.5	16.5	38	70.3	135	759
2"	102	18	47	79.9	156	1,360

All dimensions in mm and Weight is in grams unless otherwise stated.

TECHNICAL DATASHEET



Suitable for use on Group 2 Gas and Group 2 Liquids as defined by Pressure Equipment Directive 2014/68/EU, and Pressure Equipment (Safety) Regulations 2016, as amended. Not suitable for use on Group 1 Gases or liquids.



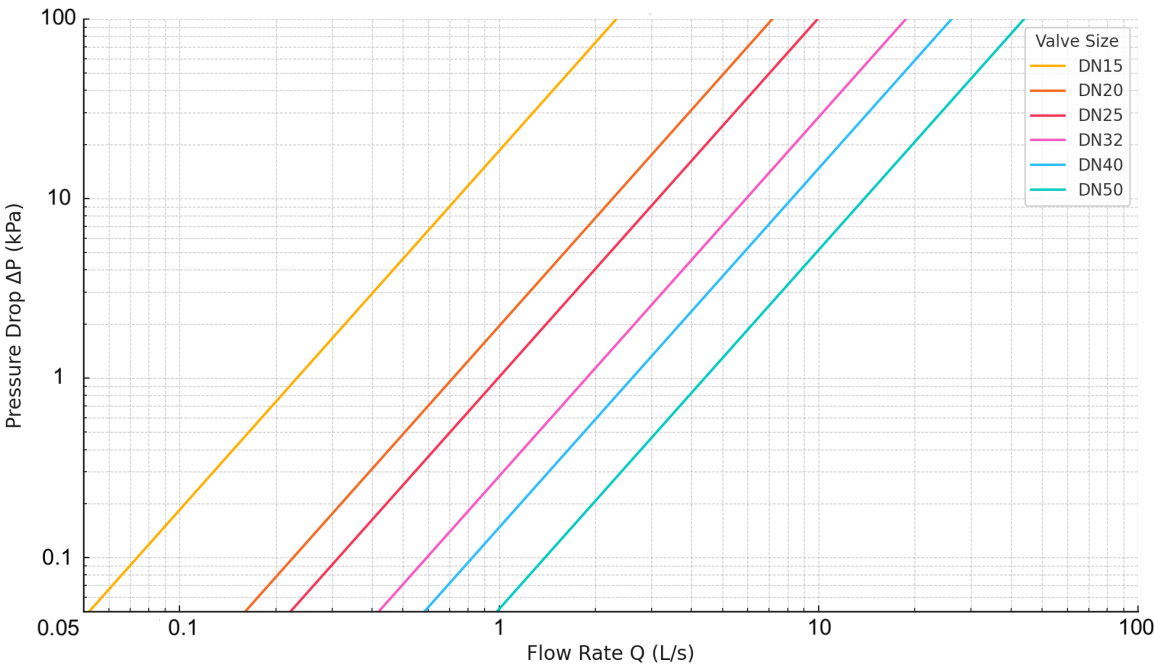
Flow Characteristics:

Size	DN15 - 1/2"	DN20 - 3/4"	DN25 - 1"	DN32 - 1.1/4"	DN40 - 1.1/2"	DN50 - 2"
Kv (m³/h)	8.39	25.82	35.79	67.6	93.93	158.42

Formula linking flow **Q (in l/s)** and theoretical valve head loss **ΔP (in KPa)**:

$$\Delta P = \left(\frac{36 \cdot Q}{K_v} \right)^2$$

Pressure Loss vs. Flow Rate Chart:



Drawings, photos and data contained in this document are provided for information only. IVAL reserves the right to change them without notice.

