

DZR Brass Ball Bib Cock Valve

PN16

Size 1/2" to 1"

Specifications:

IVAL® DZR Brass Ball Bib Cock Valve with EN12165 CW602N Body, two-piece construction, PN16 rating.

Anti-blow out stem, adjustable packing.

Full Bore Chrome Plated Brass (CW617N) Ball. PTFE seat and stem seal.

Operator: Lever, Quarter turn.

UK END CONNECTION: BSPP Taper Thread, compatible with ISO 228.

WRAS approved.

Features:

- Ball Valves are light, compact units which are easy to install and operate, yet their robust construction ensures long, trouble-free service life.
- PN16 Pressure rating to suit demanding system pressures.
- 90° handle operation for simple use
- Full bore design to facilitate optimal flow rates with minimum turbulence
- Integrated Hose Union Outlet.

Pressure/Temperature Ratings:

Temperature (°C)	-10 to +100
Pressure (Bar)	16

Test Pressures:

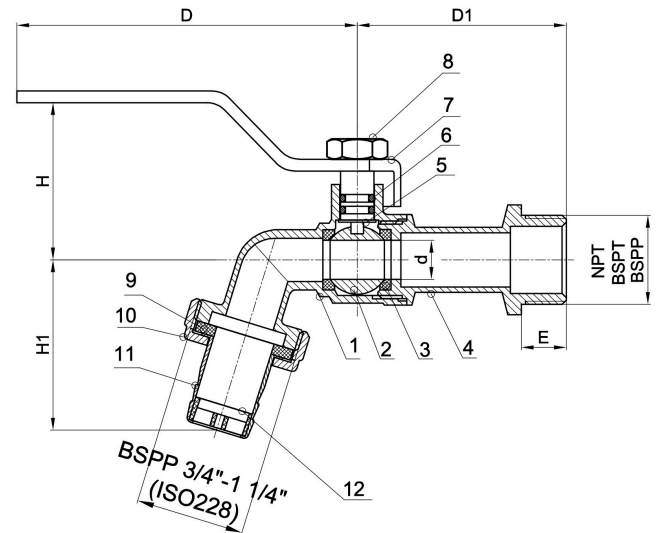
Each valve is individually Pneumatic / air tested to BS EN12266 undergoes the standard 6 bar air test.

(PNEUMATIC) Shell: 6 bar - **Seat:** 6 bar

Materials:

No.	Description	Material	Specification
1	Body	DZR Brass	Nickle Plated
2	Ball	Brass	Chrome Plated
3	Seat	Rubber	PTFE
4	Bonnet	DZR Brass	Nickle Plated
5	Stem	Brass	Nickle Plated
6	O-Ring	Rubber	NBR
7	Handle	Dacromet Steel	Chrome Plated
8	Screw	Stainless Steel	AISI 304
9	Washer Ring	Rubber	NBR
10	Union Nut	Brass	Nickle Plated
11	Hose Pipe	Stainless Steel	AISI 304
12	Manifold	ABS	White

TECHNICAL DATASHEET



Dimensions:

	DN15 - 1/2"	DN20 - 3/4"	DN25 - 1"
D (mm)	85	85	106.5
D1 (mm)	52	58	59
H (mm)	37	52	55
H1 (mm)	46.5	49	54.5
D (mm)	10	12	13.5
E (mm)	12	14	14
Wt. (gm)	180	240	340

All dimensions in mm and Weight (Wt.) is in grams unless otherwise stated.

Suitable for use on Group 2 Liquids as defined by Pressure Equipment Directive 2014/68/EU, and Pressure Equipment (Safety) Regulations 2016, as amended. Not suitable for use on Group 1 & 2 Gases or liquids Group 1.

