

Brass Swing Check Valve

PN16

Size ½" to 2" only

Specifications:

IVAL® Brass check valve, Swing type, Rubber seated, Threaded Ends, with brass body and disc to EN12164 CW617N, Stainless Steel 304 pin, PN16 rated.

Suitable for mounting in horizontal and vertical pipe (with vertical flow upwards).

UK END CONNECTION: BSPT Taper Threaded to BS EN 10226-1, compatible with ISO 7/1.

WRAS approved

Features:

- Simple swing mechanism.
- Brass material of construction and robust design ensuring longevity
- NBR Rubber seat.
- Rated 1.6 MPa.

Pressure/Temperature Ratings:

Temperature (°C)	-10 to +100
Pressure (Bar)	16

Intermediate pressure ratings shall be determined by interpolation.

Test Pressures:

Each valve is individually hydrostatically / air tested at the following test:

Shell: 6 bar (Pneumatic)

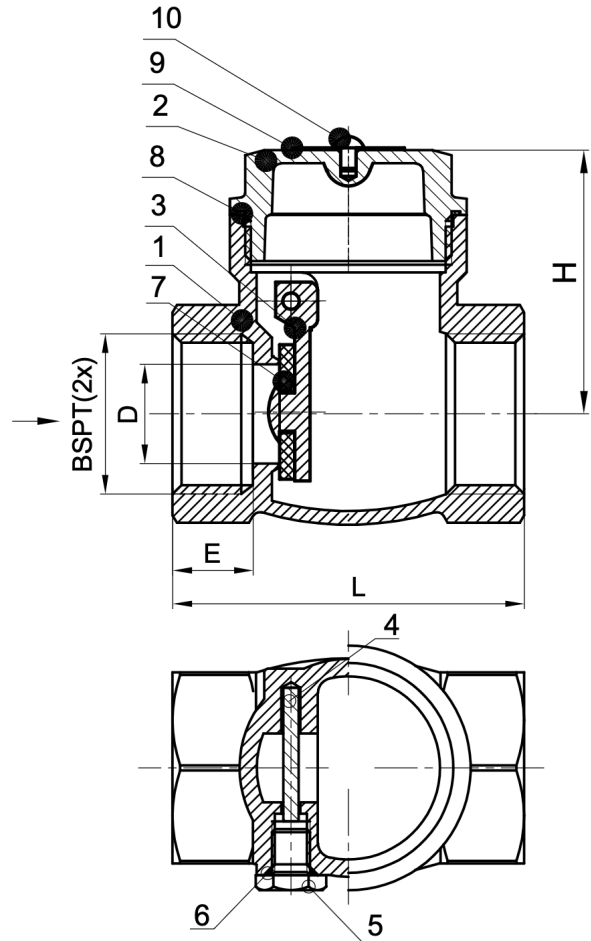
Seat: 17.6 bar (Hydraulic)

Materials:

No.	Description	Material	Specification
1	Valve Body	Brass	EN12164 CW617N
2	Bonnet	Brass	EN12164 CW617N
3	Disc	Brass	EN12164 CW617N
4	Pin	Stainless Steel	AISI 304
5	Plug	Brass	EN12165 CW614N
6	O-Ring	Rubber	NBR
7	Gasket	Rubber	NBR
8	Washer Ring	Rubber	PTFE
9	Nameplate	L2	-
10	Rivet	Stainless Steel	AISI 304

This valve is not suitable for use on Gases Group 1 & 2 or unstable fluids Group 1, as defined by the Pressure Equipment Directive 2014/68/EU.

TECHNICAL DATASHEET



Dimensions:

Size	Thread	L	H	D	E	Weight
DN15	½"	46	34.5	13	10.5	149
DN20	¾"	56	38.5	17	13.5	207
DN25	1"	63.5	45	21	14.5	312
DN32	1 ¼"	67.5	51	29	14	440
DN40	1 ½"	82	56.5	33	17	646
DN50	2"	94	65.5	42.5	19	1,044

All dimensions in mm and Weight) is in grams unless otherwise stated.



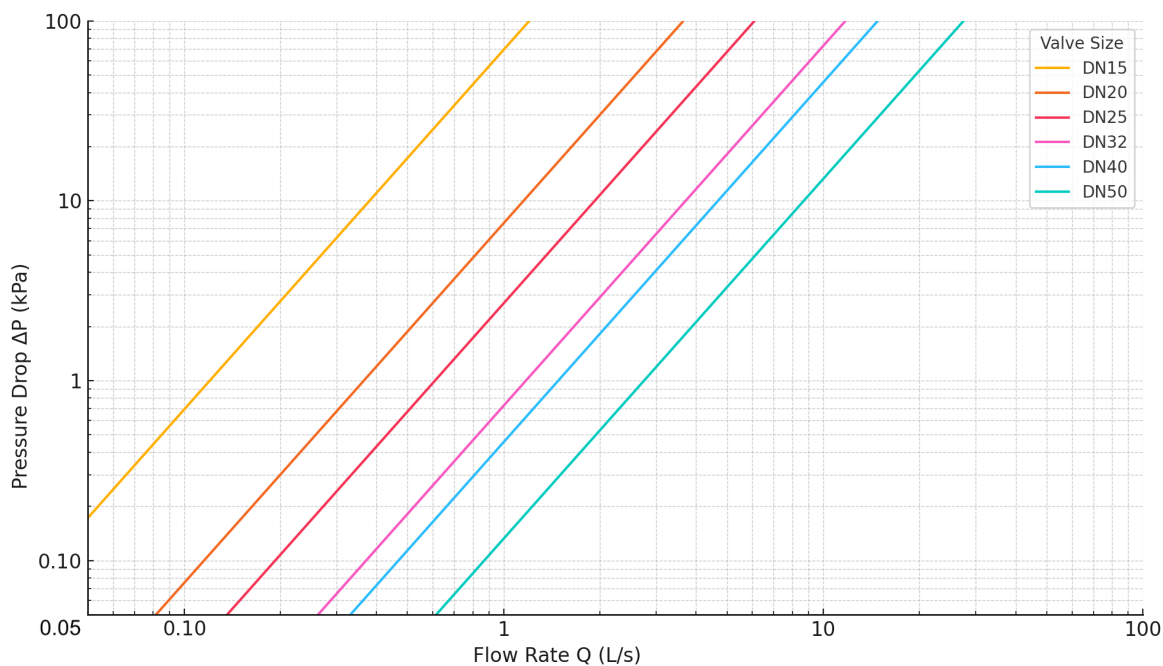
Flow Characteristics:

Size	DN15 - 1/2"	DN20 - 3/4"	DN25 - 1"	DN32 - 1.1/4"	DN40 - 1.1/2"	DN50 - 2"
Kv (m³/h)	4.33	13.14	21.94	42.24	53.33	98.94

Formula linking flow **Q (in l/s)** and theoretical valve head loss **ΔP (in KPa)**:

$$\Delta P = \left(\frac{36 \cdot Q}{K_v} \right)^2$$

Pressure Loss vs. Flow Rate Chart:



Drawings, photos and data contained in this document are provided for information only. IVAL reserves the right to change them without notice.

